

4-6I Evaluation- Transformations of Sinusoidal Functions

KNOWLEDGE

/24

24 MARKS

KNOWLEDGE

For the following functions, determine the amplitude, period, complete transformations, domain and range, and then sketch one cycle of the graph.

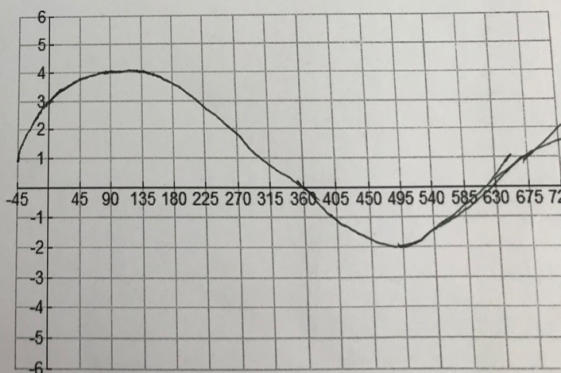
Marking Scheme (out of 12 marks each)

- 1 mark for the amplitude
- 1 mark for the period
- 4 marks for the complete transformations
- 1 mark for the domain
- 1 mark for the range
- 2 marks to transform the 5 key points listed below
- 2 marks to sketch the graph of the function

$$y = 3 \sin \left[\frac{1}{2}(x + 45^\circ) \right] + 1$$

Amplitude	Period	Domain	Range
3	720°	$-45^\circ \leq x \leq 675^\circ$	$(y \in \mathbb{R}; -2 \leq y \leq 4)$
List (in words) the complete transformations	1. Vertical stretch factor 3. \rightarrow 2. Horizontal stretch factor 2 3. Horizontal shift to left $45^\circ \rightarrow$ Vertical shift up 1 unit		

x	y	\rightarrow		
0	0	\rightarrow	-45	1
90	1	\rightarrow	135	4
180	0	\rightarrow	315	1
270	-1	\rightarrow	495	-2
360	0	\rightarrow	675	1



$y = 2 \cos[3(x - 30^\circ)] + 2$			
Amplitude	Period	Domain	Range
2	120	$30^\circ \leq x \leq 150^\circ$	VER: $0 \leq y \leq 4$
List (in words) the complete transformations	1. Vertical stretch factor 2 \rightarrow 2. Horizontal stretch factor $\frac{1}{3}$ 3. Horizontal shift to right $30^\circ \rightarrow$ vertical shift up 2 units.		

x	y	\rightarrow		
0	1	\rightarrow	30	4
90	0	\rightarrow	60	2
180	-1	\rightarrow	90	0
270	0	\rightarrow	120	2
360	1	\rightarrow	150	4

