

Review

Unit 8: Lesson 4

suffix -ly

[add 'ly' to an adjective to make an **adverb**;
describes 'how' something is done]



1. Just add 'ly'

bold + **ly** = bold**ly**

brave + **ly** =

calm + **ly** =

clear + **ly** =

clever + **ly** =

dead + **ly** =

deep + **ly** =

exact + **ly** =

glad + **ly** =



Adverbs

An adverb describes a verb, an adjective, or another adverb and answers the questions below.

How?

easily
happily
loudly
quickly
quietly
sadly
silently
slowly

How Often?

always
every day
frequently
never
often
once
seldom
sometimes

When?

after
before
early
now
since
soon
today
yesterday

Where?

away
everywhere
here
home
inside
near
outside
there

Example: The boy plays the drums loudly!



THE FORECAST



Sunny



Partly Sunny



Partly Cloudy



Sun & Rain



Raining



Thunderstorms



Snowing



Cloudy



Windy



Rainbow



Tornados / Hurricanes



Clear

Descriptive Words

Hearing Words

- buzz
- chatter
- mumble
- rumble
- squeal
- wail



Tasting Words

- bitter
- bland
- salty
- spicy
- tangy
- tart



Feeling Words

- bumpy
- frosty
- furry
- prickly
- slippery
- sticky



Smelling Words

- burnt
- fresh
- musty
- rotten
- sour
- sweet



Seeing Words

- cluttered
- crooked
- immense
- lovely
- shabby
- tidy



Color Words

- aqua
- beige
- bronze
- coral
- ebony
- violet



Have
Dove
Love
Live
Give
Leave
Five
Gave
Move
Sleeve
Serve
Glove



ROSEDALE
ACADEMY



I. Read and compare

a) One apple – **two** apples

One sandwich – **three** sandwiches

One biscuit – **four** biscuits

One banana – **five** bananas

One drink – **six** drinks

One lunch box – **seven** lunch boxes.

- I've got **a** drink.

I've got drinks.



- I've got **an** apple.

I've got apples.



- I've got **a** biscuit.



I've got biscuits.



- I've got **a** banana



I've got bananas.



b) I've got two biscuits, but I haven't got a drink.

I've got three apples in my lunch box.

I haven't two bananas, I've got one banana.

I haven't got a drink!-I've got two drinks, here you are!

- This is my lunch box. I've got an apple and two sandwiches in it. I haven't got a banana. Also I've got two drinks.

II. Write what you've got (✓) and what you haven't got (×).







Simple Future Tense

Singular: use will /shall with 1st form of the verb

Plural: use will /shall with the 1st form of the verb

Negatives are formed by adding not after will

Negatives are formed by adding not after will

Questions are made by placing will at the start of the sentence

Questions are made by placing at the start of the sentence



I will visit her tomorrow

We will visit her tomorrow

John will not drive my car

They will not learn if they don't listen

Will you come with me?

Will they come with us?

Will: Negative

Subject	Will	Not	Verb in simple form
I	will	not	play
You	will	not	study
He, She, It	will	not	work
We	will	not	eat
You	will	not	try
They	will	not	cook

Will not = Won't

SUPERHERO SEARCH



Help the Superheroes find the **letter X** in the words **below**.
Is the **letter X** at the **beginning**, the **middle** or the **end** of the word?

What sound does the **letter X** make in each word?

Do any of these words rhyme?



xylophone

The sounds of **X**:

X can sound like a 'Z'

X can sound like a 'KS'

X can say its own name



x-ray



mixer



tuxedo



box



fix



fox



six

KS

&

X

Final /t/ - /k/ Minimal Pairs Picture Cards



beat



beak



wheat



weak



kit



kick



sit



sick



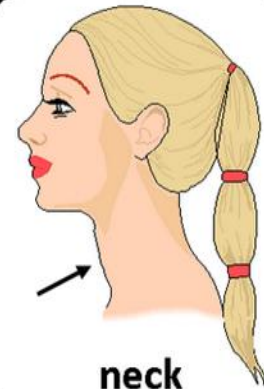
pet



peck



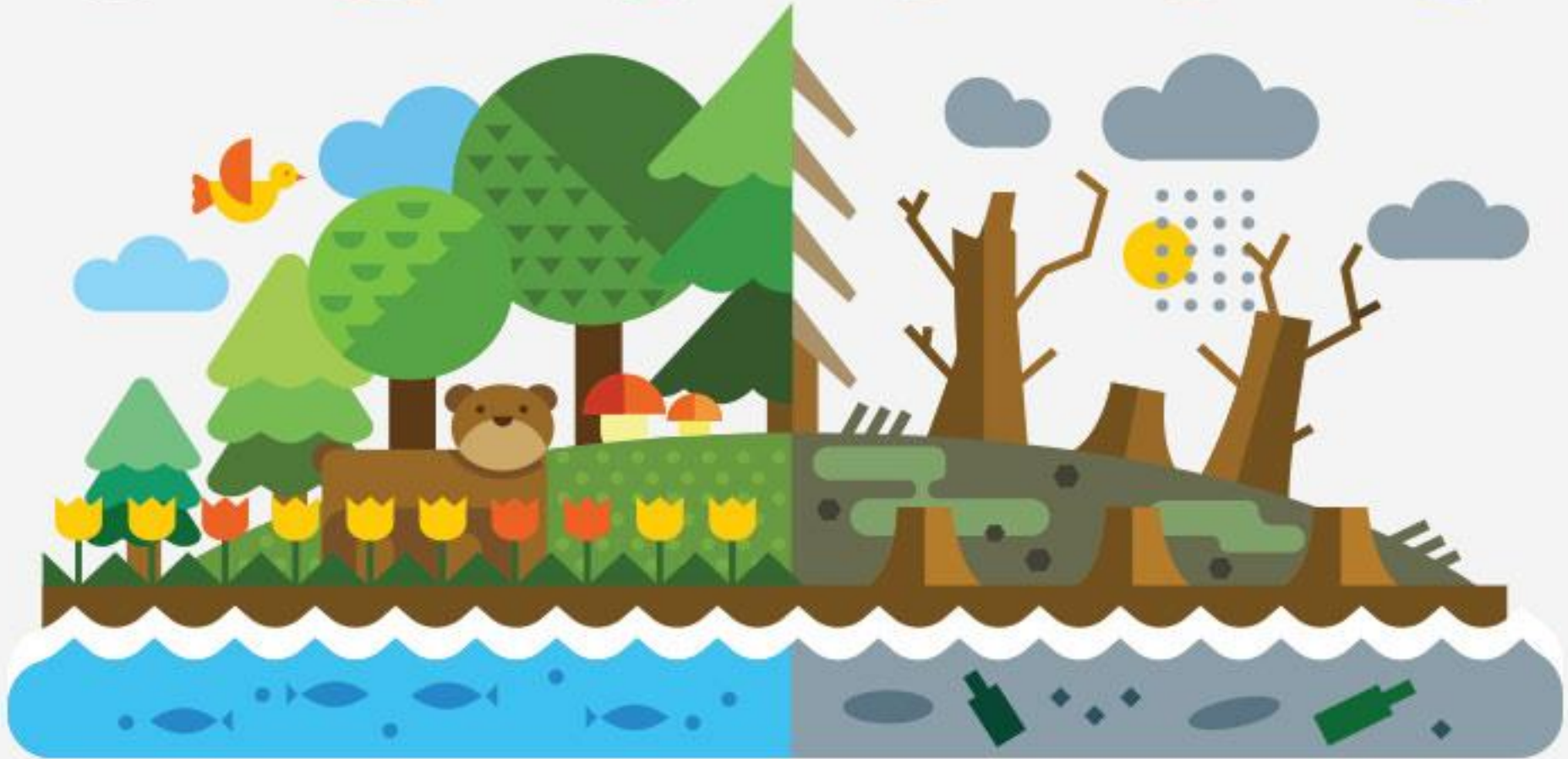
net



neck

Air Pollution





In just 1 year, people all over the world throw away 2.48 million tons of plastic bottles and jars. We use between 500 billion and 1 trillion plastic bags. A lot of it ends up as trash. This trash leads to pollution. It is a big problem.

WHAT ON EARTH? GLOBAL

Climate change alters the key elements needed for habitats which is important for wildlife survival.



MELTING
ICE CAPS



Melting arctic ice removes hunting grounds from Polar Bears.



Warmer water temperatures cause population declines for trout, salmon and other species that require cold water to survive.

HOW IT
EFFECTS
ANIMALS



Rising ocean temperatures have already caused massive coral bleaching, leading to the collapse of these ecosystems which sustain huge numbers of fish.



WARMING

The polar bear's uncertain future

The Arctic's top predator under threat from climate change and increased interactions with people



Major threats

Climate change

Classified as marine animal as range is on sea ice

- ▶ **Sea ice retreating because of global warming**
- ▶ **Habitat decreasing in both quality and area**

Other threats

- ▶ Increased interactions with humans
- ▶ Illegal killings
- ▶ Pollution
- ▶ Disturbance from shipping
- ▶ Legal killings by indigenous people
- ▶ Legal trade in skins and animal parts

Global range

Estimated global population
20,000 - 25,000



Protected from hunting since 1973
Largest bear species
Max lifespan
Male: 25 years
Female: 30 years

Range limited by southern extent of sea ice

Population	Habitat
● <500	■ Data deficient
● 500-1,000	■ Declining
● 1,000-1,500	■ Increasing
● 1,500-2,000	■ Stable
● 2,000-2,500	
● 2,500-3,000	

31,000 body parts recorded in legal trade 1992 -- 2006
- included skins, claws, teeth, skulls

PLASTICS BREAKDOWN

WE USE TONS OF PLASTIC. IT'S IN **EVERYTHING** FROM PACKAGING TO TOYS, TO THE DASHBOARD IN YOUR CAR. MASSIVE AMOUNTS OF IT END UP IN THE OCEAN. IT CONTAINS TOXINS, AND ABSORBS MORE TOXINS. IT ENTANGLES AND KILLS SEA LIFE. IT CERTAINLY DOESN'T BIODEGRADE. BUT THERE ARE WAYS WE CAN HELP.

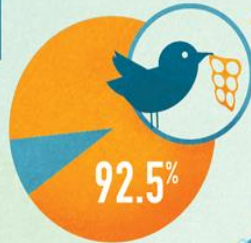


BAD FOR THE OCEAN, BAD FOR US



54%

OF THE **120** MARINE MAMMAL SPECIES ON THE THREATENED LIST HAVE BEEN OBSERVED **ENTANGLED** IN OR **INGESTING** PLASTIC.



92.5% OF DEAD SEABIRDS [NORTHERN FULMARS] IN A STUDY HAD **INGESTED** PLASTIC IN AMOUNTS EQUAL TO **5%** OF THEIR BODY WEIGHT.



HOW BIG IS THE PROBLEM?

73.9
MILLION POUNDS

OF PLASTIC ARE SPREAD THROUGHOUT THE WORLD'S GYRES.

AMERICANS USE ROUGHLY **100 BILLION** PLASTIC BAGS PER YEAR. **PLASTIC BAGS CAN TAKE 400 TO 1,000 YEARS TO DECOMPOSE**, BUT THEIR

CHEMICAL RESIDUES REMAIN FOR YEARS AFTER.

IT'S EXPENSIVE TOO...

AS OF 2009, SOUTHERN CALIFORNIA CITIES HAD SPENT OVER **\$1.7 BILLION** TO KEEP WATER-WAYS FROM BEING OVER LEGAL TRASH LIMITS.

CHEMICALS USED IN PLASTICS LIKE PHTHALATES AND FLAME RETARDANTS HAVE BEEN FOUND IN FISH, MOLLUSKS, SEA MAMMALS, AND OTHER SEA LIFE

HOW MUCH PLASTIC ENDS UP IN THE OCEAN?



CIRCULAR CURRENTS (**GYRES**) THOUSANDS OF MILES ACROSS COLLECT IMMENSE AMOUNTS OF PLASTIC IN ALL OF THE WORLD'S OCEANS.

MICROPLASTIC CONCENTRATIONS IN THE NORTH PACIFIC GYRE **INCREASED 100X IN THE PAST 40 YEARS.**

CURRENTS CARRY THE PLASTIC EVERYWHERE.

RUBBER DUCKS LOST FROM A SHIPPING CONTAINER IN THE **NORTH PACIFIC** WERE FOUND NEAR **SCOTLAND**, IN THE NORTH ATLANTIC. TSUNAMI DEBRIS FROM JAPAN ARRIVED IN **NORTH AMERICA**, AFTER CROSSING THE LARGEST OCEAN ON EARTH IN **JUST 10 MONTHS.**

PLASTIC IS MADE OF TOXINS



331 MILLION BARRELS OF PETROLEUM & NATURAL GAS LIQUIDS

WERE USED TO MAKE U.S. PLASTIC PRODUCTS, EQUAL TO ABOUT **5%** OF THE NATIONAL PETROLEUM CONSUMPTION.

PLASTICS CONTAIN **TOXIC** CHEMICALS



FACT:



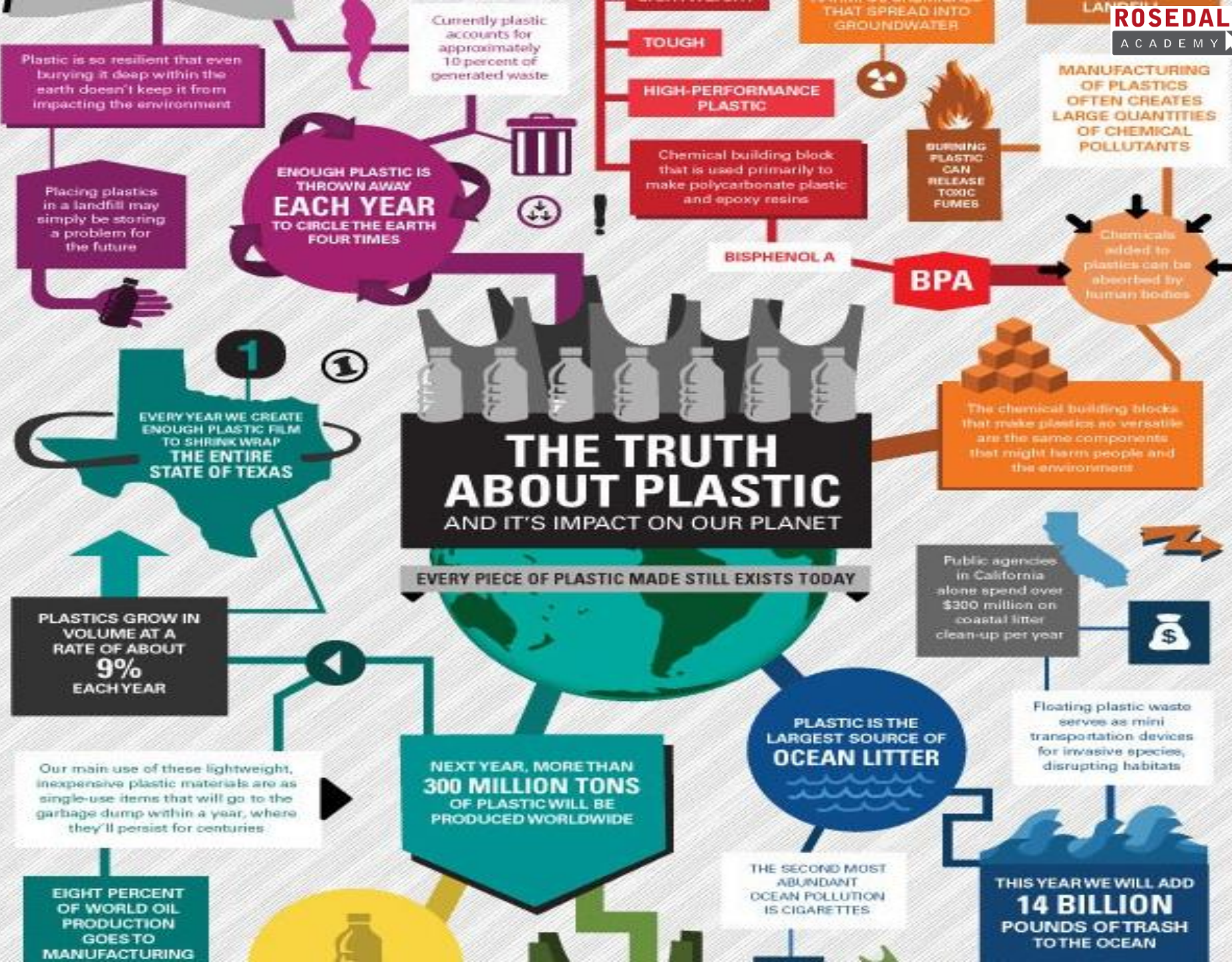
MORE TOXINS ADHERE AS PLASTIC BREAKS DOWN

IN PLASTIC FROM **THE NORTH PACIFIC GYRE.**



40% CONTAINED PESTICIDES LIKE DDT. **50%** CONTAINED PCBs (**BANNED** BY U.S. CONGRESS IN 1979, FOR HAVING VARIOUS **NEUROTOXIC** EFFECTS). **80%** CONTAINED PAHs (MAY BE **HIGHLY CARCINOGENIC**).

FLOATING TOXIC MICROPLASTICS ARE OFTEN **INGESTED** BY MARINE LIFE, WHICH IN TURN IS **CONSUMED BY US.**



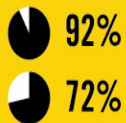
THE TOXIC TWENTY

WHICH STATES ARE MOST RESPONSIBLE FOR TOXIC AIR POLLUTION?

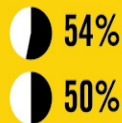
The Natural Resources Defense Council (NRDC) recently published its annual "Toxic Twenty" list, ranking U.S. states by their toxic air pollution. Which ones are responsible for the largest share of toxic emissions from the electric sector? And how do they threaten the health of our families and children?

THE TOXIC TWENTY

Among all 50 states and the District of Columbia, the "Toxic Twenty" account for:



In perspective, these same states compose just:



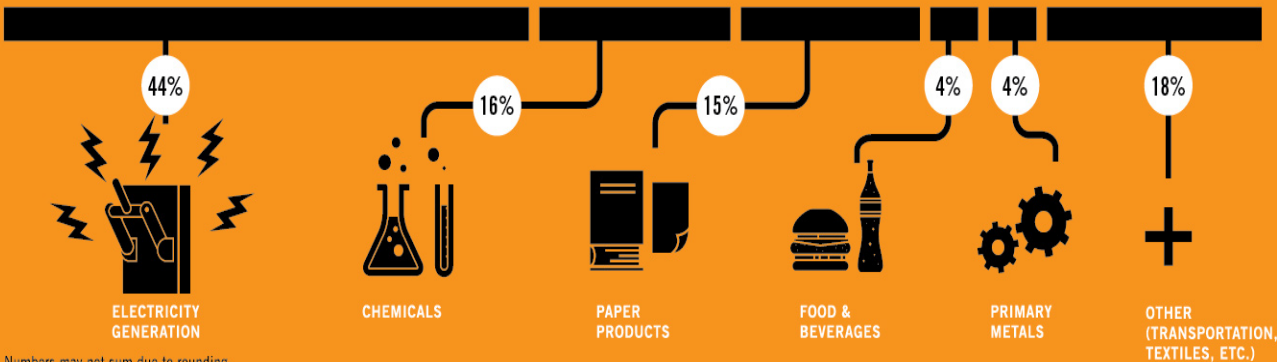
ELECTRIC SECTOR TOXIC AIR POLLUTION (MILLION POUNDS)



THE AIR WE BREATHE

Emitting nearly 310 million pounds of toxic air pollution, coal- and oil-burning power plants in the electric sector made up the largest source of all industrial toxic air pollution in 2010.

PERCENT OF TOTAL TOXIC AIR POLLUTION



HEALTH RISKS

"POWER PLANTS ARE THE BIGGEST INDUSTRIAL TOXIC AIR POLLUTERS IN OUR COUNTRY, PUTTING CHILDREN AND FAMILIES AT RISK BY DUMPING DEADLY AND DANGEROUS POISONS INTO THE AIR WE BREATHE."

—Dan Lashof, Climate Center Director at NRDC

AIR TOXICS FROM COAL-FIRED POWER PLANTS CAN CAUSE THE FOLLOWING MAJOR HEALTH RISKS:



BIRTH DEFECTS



CHRONIC AND ACUTE BRONCHITIS



RESPIRATORY ILLNESS



HEART ATTACKS



CANCER



NERVOUS SYSTEM DAMAGE

ACCORDING TO THE ENVIRONMENTAL PROTECTION AGENCY, IF POWER PLANTS WERE TO REDUCE TOXIC POLLUTION AS URGED BY THE "MERCURY AND AIR TOXICS" STANDARDS, IT COULD SAVE:



UP TO 17,000 LIVES EVERY YEAR BY 2015.



AND PREVENT AS MANY AS 120,000 CASES OF CHILDHOOD ASTHMA.

SOURCES: NATURAL RESOURCES DEFENSE COUNCIL, ENVIRONMENTAL PROTECTION AGENCY

A COLLABORATION BETWEEN GOOD AND COLUMN FIVE

PROTECTING OUR PLANET STARTS WITH YOU



**BIKE MORE
DRIVE LESS**



EDUCATE

When you further your own education, you can help others understand the importance and value of our natural resources.

Volunteer!



Volunteer for cleanups in your community. You can get involved in protecting your watershed too!



**reduce
REUSE
recycle**

Cut down on what you throw away. Follow the three "R's" to conserve natural resources and landfill space.

CONSERVE WATER



The less water you use, the less runoff and wastewater that eventually end up in the ocean.



choose sustainable



Learn how to make smart seafood choices at www.FishWatch.gov.

Trees provide food and oxygen. They help save energy, clean the air, and help combat climate change.



**PLANT
A TREE**



Buy less plastic and bring a reusable shopping bag.



Don't send chemicals into our waterways.

Choose nontoxic chemicals in the home and office.



**Long-lasting
light bulbs
- ARE A -
BRIGHT
IDEA**

Energy efficient light bulbs reduce greenhouse gas emissions. Also flip the light switch off when you leave the room!



What have you
LEARNED?